

Your Place to Call Home.



Presenting
569 E 1445 N, Shelley, Idaho

3,146 sq. ft. / 1,573 sq. ft. main level

3 Bedrooms / 2 Baths

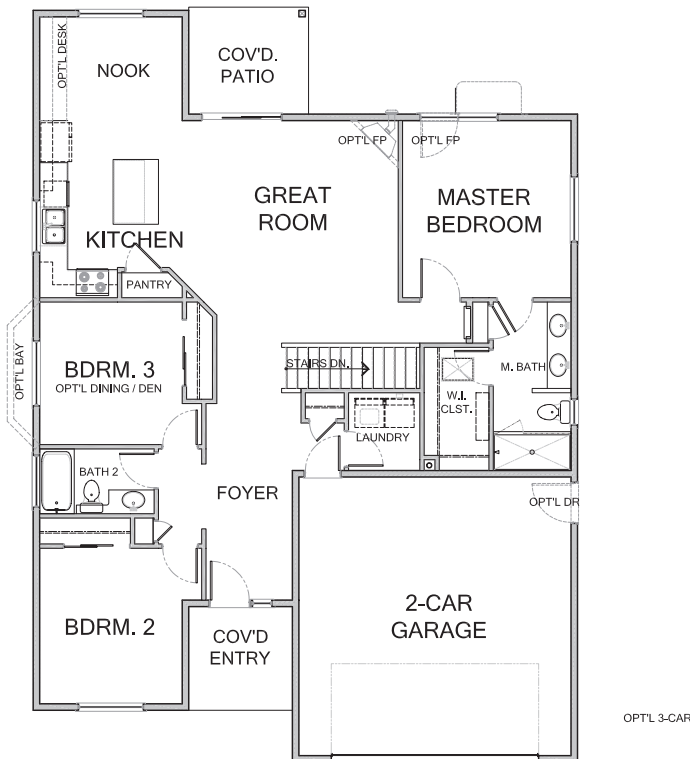
List Price: \$ 249,900 Lot & Home

Includes full unfinished basement

Lot Only: \$29,900



(photo shown of similar home)



Community map on reverse.

- Lot 1 - Block 1
- One acre lot - 2 horses allowed
- Across from Journey's End Golf Course
- Granite countertops throughout
- Hardwood and tile flooring
- Vaulted ceilings and gas fireplace with tile
- Ceiling fans in the master & 2nd bedroom
- Custom-built Knotty Alder cabinets
- Custom closet packages
- Covered front & rear patios
- Choose your colors & options



For more information, please contact:



Shay Kahl, Broker, Taft Dire LLC

3320 Edwards Drive
Idaho Falls, Idaho 83401

208.419.3671 (Office)

208.403.1038 (Cell)

Directions:

I-15 to ext 108, east toward Shelley, before the bridge turn north on 600 E. Awbrey Downs community will be on the west side of the road across from Journeys End Golf Course.